



Technical sheet CRAFv3b

Extinguishing bunds dedicated to indoor installation

Use

From 100 kVA to 3 150 kVA electric transformer used indoor.

Objective

To protect against dielectric fluid transformer fire risk. Compliance with EN 61936-1 norm and its equivalent specific standard within country of installation.

The integrated extinguishing system allows quick draining of the dielectric fluid inside the bund as well as a natural fire extinguishing.

All our videos on our website: www.akhelec.com

Conception

CRAFv3 Range													
References	Volume (l)	Outer Dimensions (mm)		Inner Dimensions (mm)			Transformer rise (mm)	Beam width (mm)	Mass without grating (kg)	Mass with grating (kg)	Maximum allowable load (kg)	Center distance (mm)	
		L x	I x	L x	I x	h						Min	Max
CRAF0160v3	157	1300	900	1220	820	222	305	80	81	102	1000	520	670
CRAF0250v3	255	1360	960	1280	880	292	375	80	95	119	1500	520	820
CRAF0400v3	334	1460	1080	1380	1000	307	390	80	115	145	1800	520	820
CRAF0630v3	450	1600	1150	1520	1070	342	425	80	150	183	2500	520	820
CRAF0800v3	666	1680	1230	1600	1150	427	510	80	174	211	3000	670	1070
CRAF1000v3	823	1830	1380	1750	1300	427	510	100	213	260	3800	670	1070
CRAF1250v3	914	1830	1380	1750	1300	467	550	100	223	270	3800	670	1070
CRAF1600v3	1067	2050	1380	1970	1300	482	565	100	245	297	4200	820	1200
CRAF2000v3	1419	2300	1380	2220	1300	557	640	100	289	348	5700	820	1200
CRAF2500v3	1484	2350	1560	2270	1480	507	590	100	315	384	6200	820	1200
CRAF3150v3	2042	2650	1560	2570	1480	602	685	120	385	464	7900	820	1200

Complete range revised for compatibility with the European regulation about « Ecodesign 2021 » (Regulation (UE) No 548/2014 modification 2019/1783).

30/10 thick steel sheet polyester painting process (norm ISO 12944 cat. C3 holding 480h Salt fog test ISO 9227)

RAL 7033 (concrete grey). Total dielectric fluid containment. Compliance with EN 61936-1 norm and its current equivalent specific standard within country of installation.

Grounding with copper terminal.

Welding water tightness is provided by process control and qualification as well as penetrant testing.

Extinguishing system is composed by a set of galvanized flaps assembled in factory. **(Patented model).**



EXTINGUISHING SYSTEM

**BEAMS
(ADJUSTABLE CENTER DISTANCE)**

Réf. : CRAFv3 FTech [EN] Rév. 1 Page 1 / 2	GMT - ZI Courtine - 405, rue du Grand Gigognan - 84000 Avignon - France Tél : +33 (0)4.90.85.08.64 - Fax : +33 (0)4.90.25.61.10 e-mail : gmt@gmtinternational.fr / Web : www.gmtinternational.fr AKHELEC - 337 Paseo de Ferrocarril, 1º 4ª - 08860 Castelldefels - Spain Ph : +34 932 72 39 00 - M : +34 630 918 052 e-mail International : akhelec@akhelec.com / Web : www.akhelec.com	Mise à jour : 29/11/2021 Auteur : VVR
---	--	---



Technical sheet CRAFv3b

Extinguishing bunds dedicated to indoor installation

Installation

The transformer is placed on two painted beams whose center distance is adjusted to suit the transformer brackets
Delivered with user's manual

Delivery

1 week if available in stock or 5 to 6 weeks after PO reception (may be longer during holiday periods).

Options

- Lifting eye-bolt.
- Isolating Teflon plates to be installed below transformer wheels
- Hot Dip Galvanized grating installed on top of the extinguishing flaps to allow staff transit
- Anti-vibration system NOVIB



Lifting eye-bolt



Isolating teflon plates



Grating



Anti-vibration system NOVIB

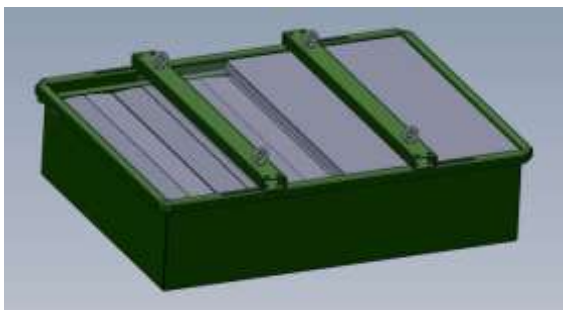


Nota Bene :

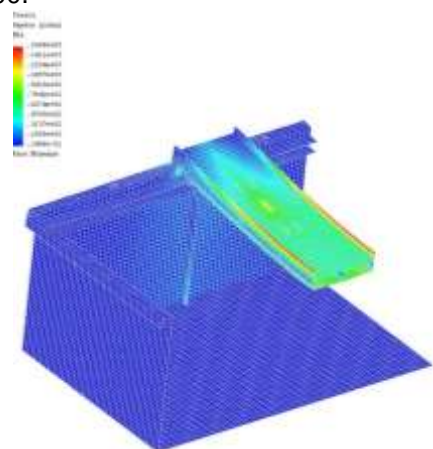
During bund selection, please ensure the compatibility between transformer U brackets and tubular bund thanks to dimensions described into the previous table. (beam width).

Engineering

Our CRAF range is designed and dimensioned to resist to a maximum mechanical strain of 235MPa with a beam distortion less than L/300.



3D bund modelization



Strain and beam distortion with maximum allowable load for each model

<p>Réf. : CRAFv3 FTech [EN] Rév. 1 Page 2 / 2</p>	<p>GMT - ZI Courtine - 405, rue du Grand Gigognan - 84000 Avignon - France Tél : +33 (0)4.90.85.08.64 - Fax : +33 (0)4.90.25.61.10 e-mail : gmt@gmtinternational.fr / Web : www.gmtinternational.fr AKHELEC - 337 Paseo de Ferrocarril, 1º 4ª - 08860 Castelldefels - Spain Ph : +34 932 72 39 00 - M : +34 630 918 052 e-mail International : akhelec@akhelec.com / Web : www.akhelec.com</p>	<p>Mise à jour : 29/11/2021 Auteur : VVR</p>
--	--	---