



Technical Sheet BAFv3

EXTINGUISHING RETENTION BUNDS

Use

Mainly used for 100 kVA to 5 MVA transformers.
Capacitors, compensating impedances, auto-transformers, TSA - TCI, inductances coils.

Rapport d'essai du laboratoire du feu du
Centre National de Prévention et de Protection
N° PE 96 5070
N° PE 09 7973
Rapport d'essais TÜV Rheinland
N° 284 090 80-002

Scope

To achieve fire hazards compliance with standards **EN 61936-1** and equivalent specific standards in the country of installation (*doc International Standards AKHnorm*).

The integrated extinguishing system allows quick dielectric discharge inside the bund as well as natural fire suppression.

All the tests videos are available on our website: www.akhelec.com

Conception

Full range reviewed for compatibility with Ecodesign 2021 regulation (EU Regulation No 548/2014 modification 2019/1783).

3 and 4mm thick galvanized steel sheet.

Earthing with copper braids.

Complete dielectric containment. Compliance with standards **EN 61936-1** and equivalent specific standards in the country of installation (*doc International Standards AKHnorm*).

Tested sealing. Welding Water-tightness is ensured by control and qualification of the welding process thanks to flaw detection test with solvent.

Extinguishing system relying on galvanized steel baffles assembled in the factory (**patented system**).

BAFv3 Range

References	Volume (l)	Overall Dimensions (mm)			Inner Dimensions (mm)			Transformer elevation (mm)	Additional Height Rolling option (BAFR)	Wheelbase (mm)	Weight (kg)	Weight with grating (kg)	Maximum charge allowed (kg)	Axial distance (mm)	
		L x	I x	h	L x	I x	h							Min	Max
BAF0160 v3	157	1320	900	320	1220	820	257	300	Please contact us	150	96	118	1000	520	670
BAF0250 v3	255	1380	960	390	1280	880	327	370		150	112	137	1500	520	820
BAF0400 v3	334	1480	1080	405	1380	1000	342	385		150	133	164	1800	520	820
BAF0630 v3	450	1620	1150	440	1520	1070	377	420		230	183	216	2500	520	820
BAF0800 v3	666	1700	1230	525	1600	1150	462	505		230	211	248	3000	670	1070
BAF1000 v3	823	1850	1380	525	1750	1300	462	505		230	245	292	3800	670	1070
BAF1250 v3	914	1850	1380	565	1750	1300	502	545		230	267	314	3800	670	1070
BAF1600 v3	1067	2070	1380	580	1970	1300	517	560		230	288	341	4200	820	1200
BAF2000 v3	1419	2320	1380	655	2220	1300	592	635		230	330	390	5700	820	1200
BAF2500 v3	1484	2370	1560	605	2270	1480	542	585		230	355	425	6200	820	1200
BAF3150 v3	2042	2670	1560	700	2570	1480	637	680		230	413	492	7900	820	1200
BAFK05 v3	2099	2920	2060	540	2820	1980	476	520		230	588	707	10000	820	1500
BAFK10 v3	2409	3080	2230	540	2980	2150	476	520		230	652	787	13000	820	1500
BAFK20 v3	2983	3520	2400	540	3420	2320	476	520		230	757	927	16000	820	1500
ICE 600	2165	2985	2270	1090	2800	2150	920	1090		220	1250	1430	12000	520	1280
ICE 1000	2643	3450	2350	1090	3270	2230	920	1090		220	1400	1620	12000	520	1280

Delivery

Lead time of 1 week if available in stock, otherwise 5 to 6 weeks from PO reception for the proposed standards models

These retention bunds can be manufactured with specific dimensions and for other industrial uses. In this case, please contact us.

Réf. : BAFv3 FTech [EN] Rév. 0 Page 1 / 3	<p>GMT - ZI Courtine - 405, rue du Grand Gigognan - 84000 Avignon - France Tél : +33 (0)4.90.85.08.64 - Fax : +33 (0)4.90.25.61.10 e-mail : gmt@gmtinternational.fr / Web : www.gmtinternational.fr AKHELEC - 337 Paseo de Ferrocarril, 1º 4ª - 08860 Castelldefels - Spain Ph : +34 932 72 39 00 - M : +34 630 918 052 e-mail International : akhelec@akhelec.com / Web : www.akhelec.com</p>	Mise à jour : 29/06/2021 Auteur : PGO
--	--	---

Installation

The transformer is mounted on two specific galvanized steel support beams with adjustable width depending on the wheels center distance of the transformer.

Upon request, these profiles can be assembled lengthwise.

The integrated bearing roller system facilitates the implementation of the transformers indoor.

Delivered with instructions for assembly.



EXTINGUISHING SYSTEM

SUPPORT BEAMS

Options:

- Lifting eye-bolt
- 1" Draining valve & siphon
- **Kit FILTRELEC5M[®]**: filtration system placed on the drain valve of the bund allowing the rainwater disposal while trapping traces of hydrocarbon (additional documentation available on request),
- Protection box for **FILTRELEC[®]**,
- Silent-blocks NoVib,
- Galvanized grating covering the baffles for staff movement
- Insulating Teflon plates to be placed under the rollers of the transformer.



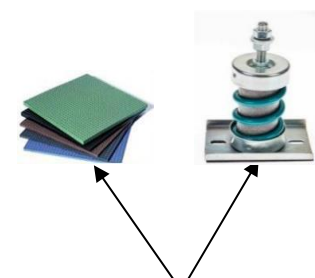
THREAD FOR DRAINING VALVE



SIPHON



KIT FILTRELEC5M[®] FILTERING CARTRIDGE



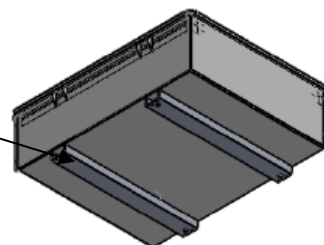
VIBRATIONS DAMPING SYSTEMS NoVib

Upon request, some adaptations can be realized:

- Support beams assembled lengthwise
- Rolling adaptation
- Provisions for fitting built-in transformers: outer surfaces coated with tar



ROLLING ADAPTATION



The transformer rollers are disassembled from the transformer to be fixed on specific places under the bund. The transformer is mounted directly on the bund support beams so the whole set can be moved easily

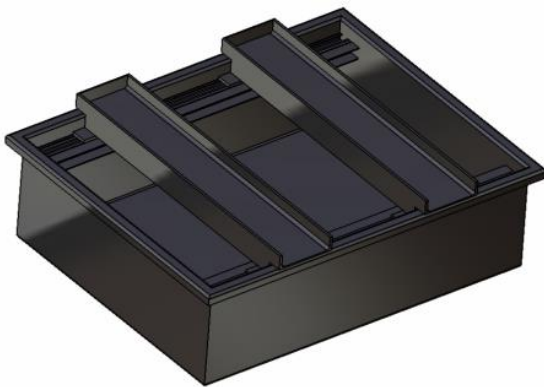
Réf. : BAFv3 FTech [EN] Rév. 0 Page 2 / 3	GMT - ZI Courtine - 405, rue du Grand Gigognan - 84000 Avignon - France Tél : +33 (0)4.90.85.08.64 - Fax : +33 (0)4.90.25.61.10 e-mail : gmt@gmtinternational.fr / Web : www.gmtinternational.fr AKHELEC - 337 Paseo de Ferrocarril, 1º 4ª - 08860 Castelldefels - Spain Ph : +34 932 72 39 00 - M : +34 630 918 052 e-mail International : akhelec@akhelec.com / Web : www.akhelec.com	Mise à jour : 29/06/2021 Auteur : PGO
--	--	---



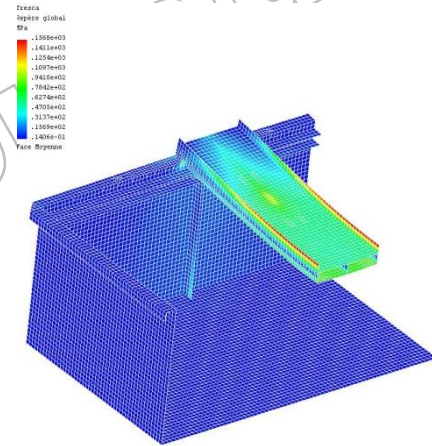
Nota Bene:

For the choice of your bund with roller fitting, please make sure that the beams of your transformer will be compatible with our bund "Support beams", thanks to the dimensions reported on the previous table (Wheelbase column)

Our BAFv2 line has been designed and dimensioned to support a mechanical effort of 235MPa and an hiperstatic deformation on the beams below L/300.



3D Modelling of a bund



Mechanical efforts and deformation modelling on the beams for the maximum allowed.